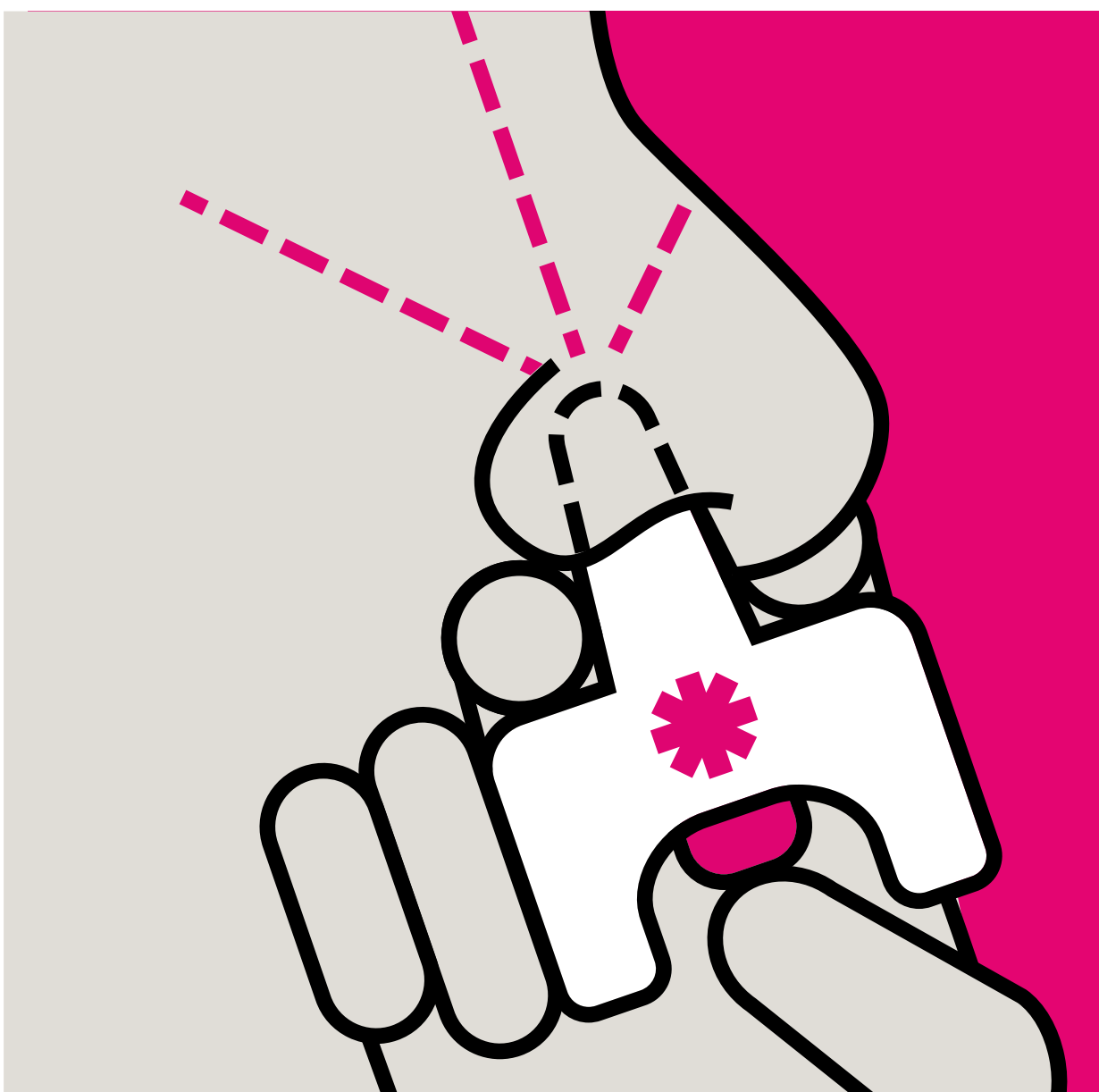


WHAT TO DO IN CASE OF A SUSPECTED OPIOID EMERGENCY



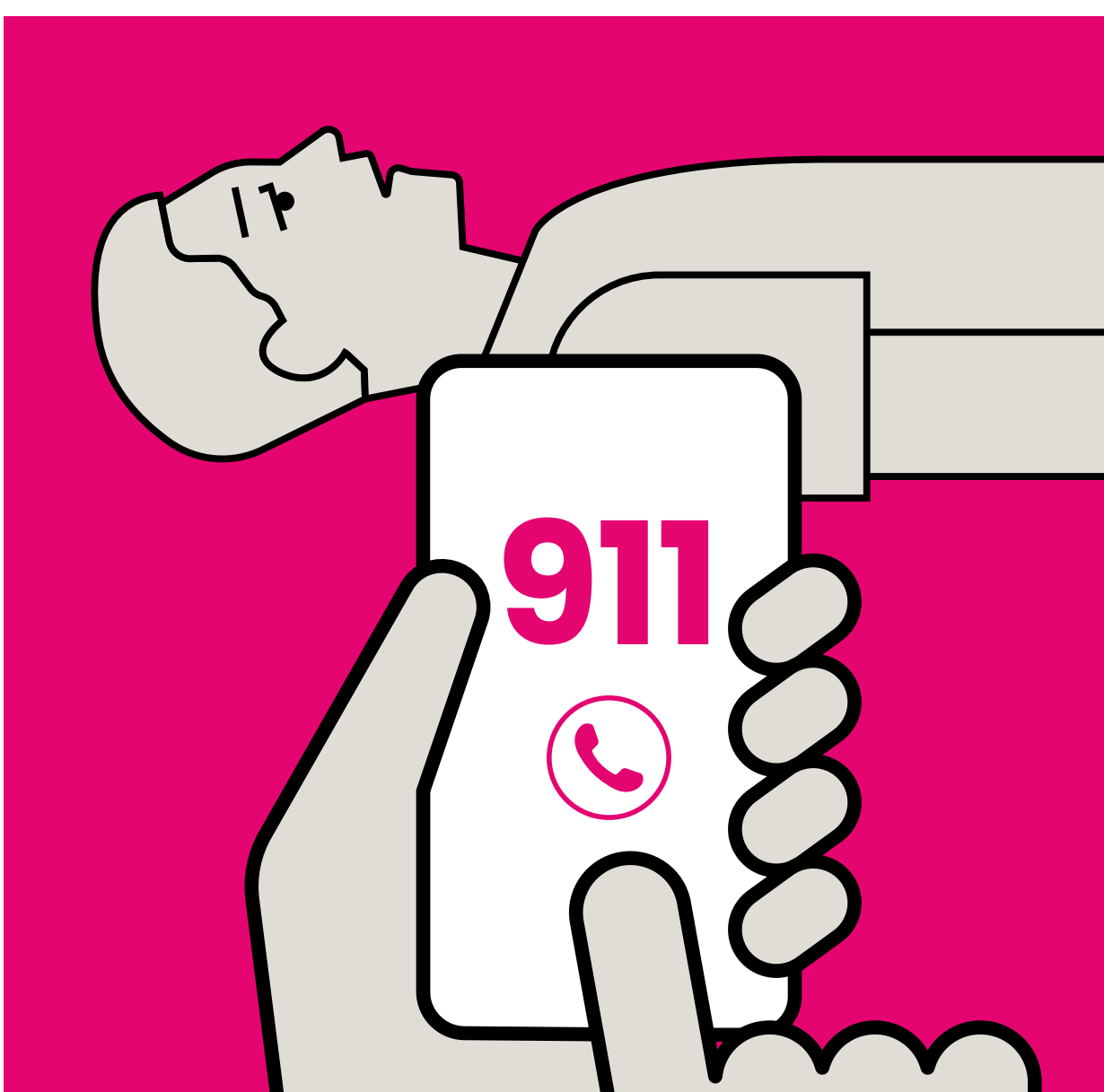
LAY

- **Check for slowed breathing or unresponsiveness.**
- Lay the person on their back and tilt the head up.



SPRAY

- **Insert device into either nostril and press plunger firmly.**



STAY

- **Call 911 immediately** and continue to administer doses as needed.

SCAN TO
LEARN MORE

